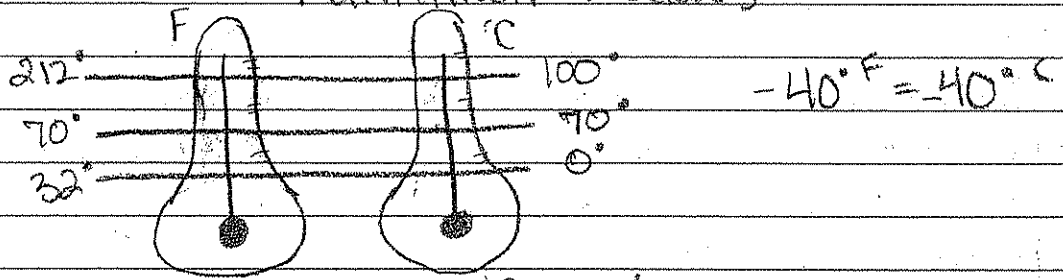


## Clouds

- \* cumulus clouds = puffy
- \* cirrus = wispy (high)
- \* stratus = blanket (low)
- \* cumulonimbus = thunderstorms

## Fahrenheit & Celsius



Temperature Scale/thermometers

## Wind/Weather

- Wind chill = makes your body feel cold

## Heat

- Don't be very hot & go into somewhere cold
- Dehydration - stop sweating, thirst, pee/poop
- \* Safety
  - Slow down
  - drink water
  - air conditioning

## Humidity

- \* goes up in summer
- \* goes down in winter
- \* a measure of water vapor in the air
- \* Relative humidity: the percent of water at a specific temperature

# Weather Notes

- \* Floods kill more people than any other thing.
- \* Why? - It's unexpected!
- \* Triangle/Blue pattern (when watching weather news)  
= cold front
- \* half sun/red pattern = warm front
- \* then both together = stationary front
- \* Low pressure = counter clockwise + inward
- \* When cold air + warm air meet = thunder storms
- \* warm front side = rain
- \* High pressure = clockwise + outward = nice weather
- \* meteorology = weather = helps predict weather
- \* weather satellites = 1970's

## Different Regions of the World

- o Polar =  
South Pole  
North Pole
- o temperate = Kansas
- o Arid = dry deserts
- o Tropical = right above + below equator
- o Mediterranean
- o Mountain climates = tall mountains (highlands)

\* Temperature / precipitation  
Hot vs cold      wet vs dry

- \* Houses depend on climate
- \* Climate = 30 year average
- \* WEATHER = constant; NEVER stops!

## Doppler Radar

- o Speed + Direction of wind
- o Heating / cooling = causes wind

Weather → • Humidity      • precipitation  
                 • wind              • temperature