

## Science Notes

Wispy high clouds (Contrails from a  
Airplane) = Condensation

Sunny ↘ humidity - Pressure

Temperature

wind - Coriolis affect



High pressure to Low pressure  
= Nice weather = Bad weather

Tornado warning = go to Safety (Better in  
Country than City)

Rain - Precipitation, snow, hail, sleet, fog,  
hurricanes, monsoons.

lightning - number 1 killer of storms

Thunder - is a sound wave.

Sonic boom



# Weather

Clouds  
thin, wispy

Planes

Contrails = condensation

Temperature

wind - Coriolis affect

humidity

High pressure - nice weather

Tornado warning - go to safety

Precipitation

Snow

hail

lightning

Sheet

Fog

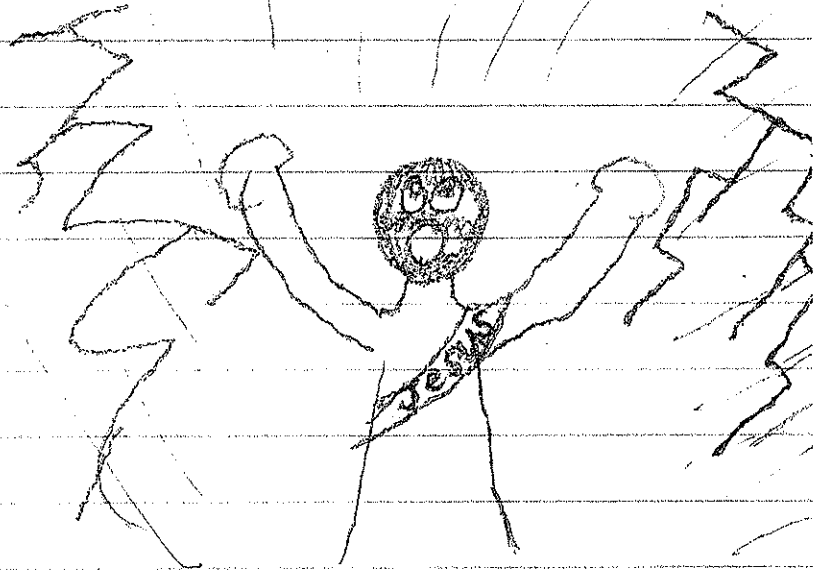
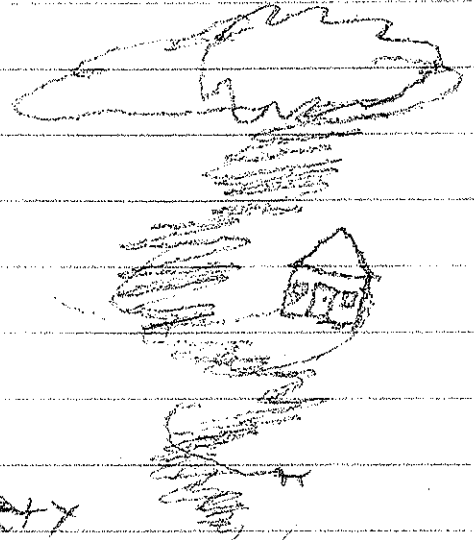
Ice

hurricanes

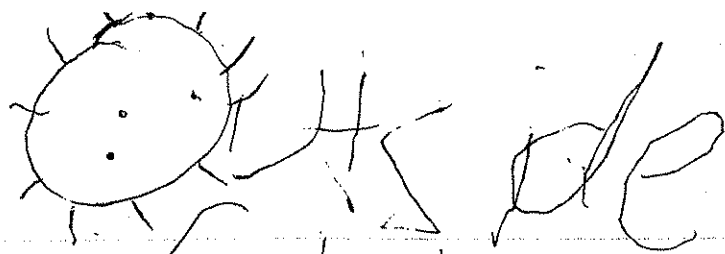
~~Tsunami~~

Typhoons

Thunder!



Boom! boom!



Clouds S-I-K

Con Trails = Condensation

SUN

Humidity

Wind / Coriolis effect

55°K

High Pressure - low

↳ Nice weather

FOG